



# GMT MONTHLY MEMBERSHIP PROGRESS REPORT

Results as of: 10/31/2023

Multiple District 28

LOCATION: UTAH

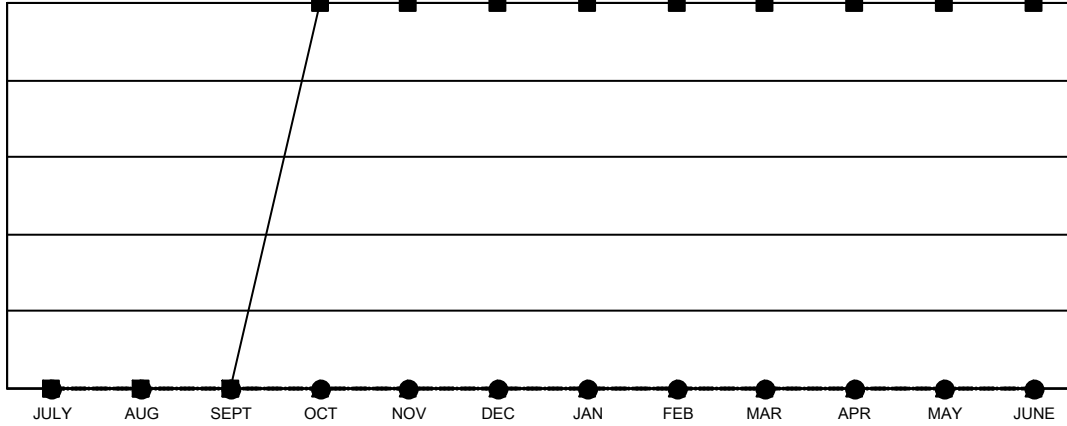
GMT: OPEN

GMT CA 1

Clubs			
RESULTS FOR 2023-2024			
QUARTER	NEW CLUB GOAL	NEW CLUBS	DROPPED CLUBS
JULY/AUG/SEPT	0	0	0
OCT/NOV/DEC	2	0	0
JAN/FEB/MAR	0	0	0
APR/MAY/JUNE	0	0	0

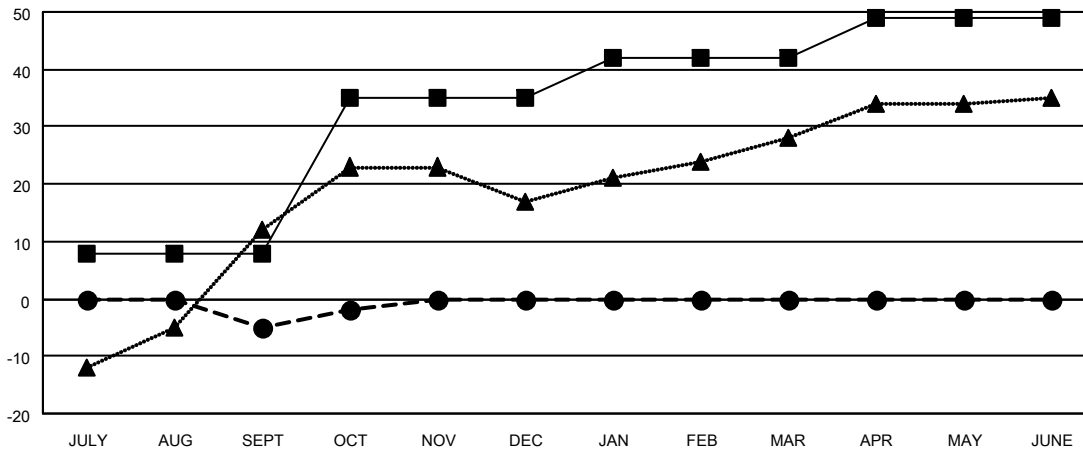
Members			
RESULTS FOR 2023-2024			
QUARTER	MEMBER GROWTH NET GOAL	MEMBER GROWTH ACTUAL	DROPPED MEMBERS ACTUAL (including transfers)
JULY/AUG/SEPT	8	26	26
OCT/NOV/DEC	27	9	5
JAN/FEB/MAR	7	0	0
APR/MAY/JUNE	7	0	0

**GOALS AND ACTUAL NEW CLUBS CUMULATIVE**



- - CURRENT YEAR GOALS FOR NEW CLUBS
- - CURRENT YEAR ACTUAL NEW CLUBS
- ▲ - LAST YEAR ACTUAL NEW CLUBS

**GOALS AND ACTUAL MEMBERS CUMULATIVE**



- - MEMBER GROWTH NET GOAL
- - MEMBER GROWTH ACTUAL
- ▲ - LAST YEAR MEMBERSHIP ACTUAL

DROPPED CLUBS: 0	16 CLUBS OF 52 ADDED 1 OR MORE NEW MEMBERS	<b>GENDER DISTRIBUTION</b> MALE            675 (69.66%) FEMALE        294 (30.34%)
<b>DROPPED MEMBERS</b> DECEASED            7 CLUB CANCELLED    0 OTHER                24 <hr/> TOTAL                31	<a href="#">CLICK HERE FOR CUMULATIVE MEMBERSHIP DATA</a>	TOTAL FAMILY UNIT MEMBERS            249 FAMILY MEMBERS PAYING HALF DUES            126